



Durapod DT 100

Tripod Turnstile

Robust turnstiles for heavy traffic use with stainless steel arms. Bi-directional, logic controlled, LED indicators included on both entrance and exit sides. Hand-operated; hand operated with drop arm; motor driven with drop arm options available.

Materials

- » 2,0 mm AISI 304 stainless steel housing.
- » Stainless steel lid and arms.
- » Cast & machined aluminium tripod hub.

Drive mechanism options

Electromechanical / Hand operated

Electromechanical / Hand operated with drop arm

Motor-driven with drop arm

In Standard Electromechanical Mechanism

- » A self-centering mechanism to ensure complete rotation of the mechanism to the home position.
- » A hydraulic damper to ensure smooth operation.
- » Anti-backup device to prevent reverse rotation once the mechanism has moved 30 degrees from the home position.
- » Fail-safe operation as standard.

Functions & Interface

- » Logic controlled interface, bi-directional operation
- » Entrance and exit directions can be individually set as controlled, locked, or free before or after installation.
- » In controlled access mode, after a release signal is received from the access control system, the turnstile unlocks in the released direction and enables one person access in the direction of travel. After each person, the turnstile rotor blocks passage again and does not permit access from either entrance or exit directions until receiving a new release signal from the access control system.
- » After the release, the turnstile blocks itself after an adjusted time if no transition or passage occurs.
- » If people from both directions would like to pass through simultaneously, the first person who activates the turnstile takes precedence.
- » An additional person is able to release the next passage cycle during an ongoing passage cycle in both directions. The turnstile controller stores up to 255 releases and lets a corresponding number of individuals pass through.
- » Relay outputs for counting passage in either direction
- » RS 232 serial port

Emergency & Power cut

- » In the event of an emergency or power cut, the mechanism unlocks the arms and the arms rotate freely in both directions. In drop-arm and in motorized versions, the hinged arm design opens the passage in both directions automatically.
- » During emergency mode, the audible alarm indicates emergency operation and the LED indicators keep flashing at the same time.
- » The turnstile resets itself automatically when the emergency alarm stops or the power is switched back on. In the drop-arm version, the dropped arm should be lifted manually. In the motorized version, the arms rotate 360° automatically to reset the blocking arm.

LED indicators

LED lights indicates the operating status of the turnstile in both directions.

	Option 1	Option 2
Green	Standby or locked	Released or free passage
Red	Released or free passage	Standby or locked

Accessories

Stainless steel apron infill
Tempered glass infill
Mounting plate for raised/suspended floor
Ramp plate
Heating kit for -40 degrees
Jump over & crawl under sensor kit integration
Additional LED indicator pictogram on the lid or on the leg
Back-up battery
Access controller integration brackets on demand

Settings

Operation mode for each directions	Controlled / Free / Locked
Audible Notifications	On/Off
Release time out	5–10–15–20 secs
Consecutive passage	On/Off
Emergency connection	On/Off
LED Indicator option	Option-1 / Option-2

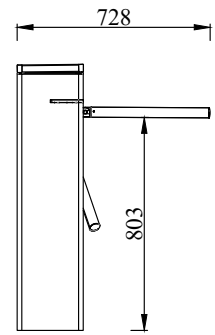
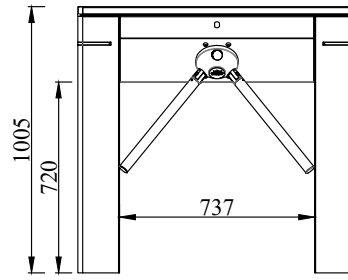
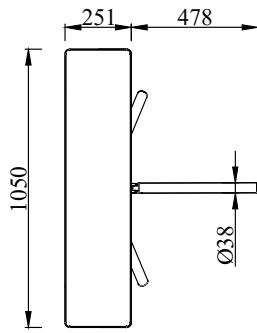
Specifications

Construction	Steel
Passage width	530 mm
Arm length	480 mm
Cabinet size (W/L/H)	250 x 1050 x 1000 mm
Weight	51 Kg
Power Supply	100 - 240 VAC, 50/60 Hz
Logic Voltage	24V DC
Standby power consumption	3.8 W
Operation Temperature	-10 ° / +70 °
IP Protection	Cabinet IP54
MCBF	10.000.000
MTRR	< 30 min.

Housing material options

- » AISI 304 Stainless steel (Standard)
- » AISI 316 Stainless steel
- » Powder coated steel in RAL colors

Dimensions



This equipment should be installed, regularly inspected, maintained and serviced by trained and authorized personnel. Preventive maintenance plans are highly recommended for a proper and safe operation. Speak to your Record representative to learn more about our service offering.